

8 MAINTENANCE AND CLEANING

The following points have to be considered during the inspection:

- 1) All screws for installing the devices or parts of the device have to be tightly connected and must not be corroded.
- 2) There must not be any deformations on the housing, color lenses, fixations and installation spots (ceiling, suspension, trussing).
- 3) Mechanically moved parts must not show any traces of wearing and must not rotate with unbalances.
- 4) The electric power supply cables must not show any damage, material fatigue or sediments.

Further instructions depending on the installation spot and usage have to be adhered by a skilled installer and any safety problems have to be removed.



CAUTION

Disconnect from mains before starting maintenance operation.



In order to make the lights in good condition and extend the life time, we suggest a regular cleaning to the lights.

- 1) Clean the inside and outside lens each week to avoid the weakness of the lights due to accumulation of dust.
- 2) Clean the fan each week.
- 3) A detailed electric check by approved electrical engineer each three month, make sure that the circuit contacts are in good condition, prevent the poor contact of circuit from overheating.

We recommend a frequent cleaning of the device. Please use a moist, lint- free cloth. Never use alcohol or solvents.

There are no serviceable parts inside the device. Please refer to the instructions under "Installation instructions".

Should you need any spare parts, please order genuine parts from your local dealer.



ADD F1-5, Block 3, No.95, Guangzhu Rd, Lanhe Town, Nansha District, Guangzhou 511480

Tel. +86 20 8499 2310/2320/2330

Fax +86 20 8499 2360

E-mail info@color-imagination.com

Website www.color-imagination.com

**Follow
us on**



www.facebook.com/color.imagination.1



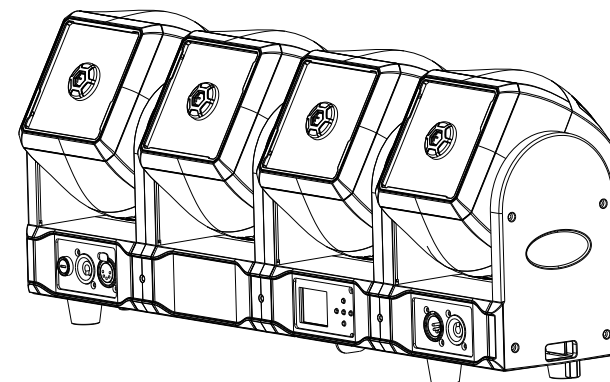
www.youtube.com/user/colorimaginationj



https://twitter.com/Color_lighting

Color[®]
IMAGINATION
the POWER of DREAM

C46 CRAZYBAR 46



CE F IP20 t_a:40°C t_c:100°C

User Manual
KEEP THIS MANUAL FOR FUTURE NEEDS

1 SAFETY INSTRUCTIONS



CAUTION

Be careful with your operations. With a dangerous voltage you can suffer a dangerous electric shock when touching wires!

This device has left the factory in perfect condition. In order to maintain this condition and to ensure a safe operation, it is absolutely necessary for the user to follow the safety instructions and warning notes written in this user manual.



IMPORTANT

Damages caused by the disregard of this user manual are not subject to warranty. The dealer will not accept liability for any resulting defects or problems.

If the device has been exposed to temperature changes due to environmental changes, do not switch it on immediately. The arising condensation could damage the device. Leave the device switched off until it has reached room temperature.

This device falls under protection-class I. Therefore it is essential that the device be earthed.

The electric connection must carry out by qualified person.

The device shall only be used with rated voltage and frequency.

Make sure that the available voltage is not higher than stated at the end of this manual.

Make sure the power cord is never crimped or damaged by sharp edges. If this would be the case, replacement of the cable must be done by an authorized dealer.

Always disconnect from the mains, when the device is not in use or before cleaning it. Only handle the power cord by the plug. Never pull out the plug by tugging the power cord.

During initial start-up some smoke or smell may arise. This is a normal process and does not necessarily mean that the device is defective, it should decrease gradually.

Please don't project the beam onto combustible substances.

Fixtures cannot be installed on combustible substances, keep more than 50cm distance with wall for smooth air flow, so there should be no shelter for fans and ventilation for heat radiation.

If the external flexible cable or cord of this luminaire is damaged, it shall be exclusively replaced by the manufacturer or his service agent or a similar qualified person in order to avoid a hazard.

51	TILT 1 ROTATION	000 - 003	No Function
		004 - 129	Forward rotation from fast to slow
		130 - 255	Backward rotation from slow to fast
52	TILT 2 ROTATION		360° Continuous TILT 2 Rotation
		000 - 003	No Function
		004 - 129	Forward rotation from fast to slow
53	TILT 3 ROTATION	130 - 255	Backward rotation from slow to fast
			360° Continuous TILT 3 Rotation
		000 - 003	No Function
54	TILT 4 ROTATION	004 - 129	Forward rotation from fast to slow
			360° Continuous TILT 4 Rotation
		130 - 255	Backward rotation from slow to fast
55	STRIP LIGHT DIMMER	0 - 255	Linear Dimmer 0 – 100%
56	SHUTTER (STRIP LIGHT)	0 - 255	Strobe frequency from slow (1 flash/sec) to fast (25 flash/sec)
57	RED (STRIP LIGHT)	0 - 255	Linear 0 -100%
58	GREEN (STRIP LIGHT)	0 - 255	Linear 0 -100%
59	BLUE (STRIP LIGHT)	0 - 255	Linear 0 -100%
60	EFFECT (STRIP LIGHT)	0 - 255	Dynamic effect options
61	EFFECT (STRIP LIGHT)	0 - 255	Speed control of dynamic effect

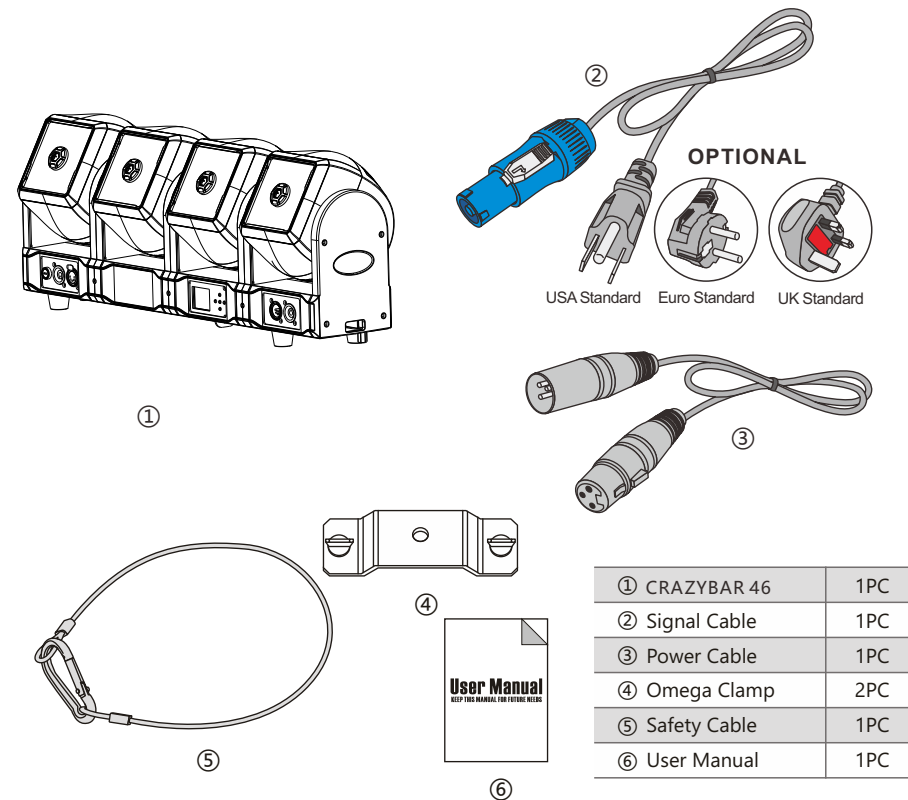
28	PATTERN SPEED	000 - 255	Indexing
		000 - 124	Speed control fast to slow, forward
		125 - 130	Stop
		131 - 255	Speed control slow to fast, Backward
29	PATTERN FADE	000 - 127	Fade In/Out
		128 - 255	Fade Out
30	PATTERN TRANSITION	000 - 255	Crossfade between layers/pattern (0: instant transition - 255: 3 seconds transition) ONLY ON LAYER MODE
31	TILT 1	000 - 255	Mirror 1 positioning (Default REVERSE HEADS option OFF)
32	TILT 2	000 - 255	Mirror 2 positioning (Default REVERSE HEADS option OFF)
33	TILT 3	000 - 255	Mirror 3 positioning (Default REVERSE HEADS option OFF)
34	TILT 4	000 - 255	Mirror 4 positioning (Default REVERSE HEADS option OFF)
35	Red 1	000 - 255	Red 1
36	Green 1	000 - 255	Green 1
37	Blue 1	000 - 255	Blue 1
38	White 1	000 - 255	White 1
39	Red 2	000 - 255	Red 2
40	Green 2	000 - 255	Green 2
41	Blue 2	000 - 255	Blue 2
42	White 2	000 - 255	White 2
43	Red 3	000 - 255	Red 3
44	Green 3	000 - 255	Green 3
45	Blue 3	000 - 255	Blue 3
46	White 3	000 - 255	White 3
47	Red 4	000 - 255	Red 4
48	Green 4	000 - 255	Green 4
49	Blue 4	000 - 255	Blue 4
50	White 4	000 - 255	White 4
51	TILT 1 ROTATION		360° Continuous TILT 1 Rotation

2 UNPACKING

The CRAZYBAR 46 is a high-performance stage lighting bar fixture that features 4 individual moving MINI heads, each of which is equipped with a powerful 60W 4-IN-1 RGBW LED light source. With its versatile design and advanced features, specially the mirror based optical system, the CRAZYBAR 46 is capable of producing a wide range of dynamic sharp and collimated BEAM lighting effects that are sure to captivate audiences and enhance performances. Also, thanks to the ingenious front neon ring design on each head, the BAR could bring ultra brilliant and magic lighting effect to the lighting designers.

The CRAZYBAR 46 also features a range of advanced lighting effects, including strobe, color mixing, and chase effects. These effects can be easily accessed and controlled via the controller, allowing for precise and customizable lighting setups.

The fixture is tuned with proper LED refresh rate for flicker free operation for TV and FILM. It's a perfect option for large scale live concerts, TV productions, road shows, clubs/bars, weddings, etc.



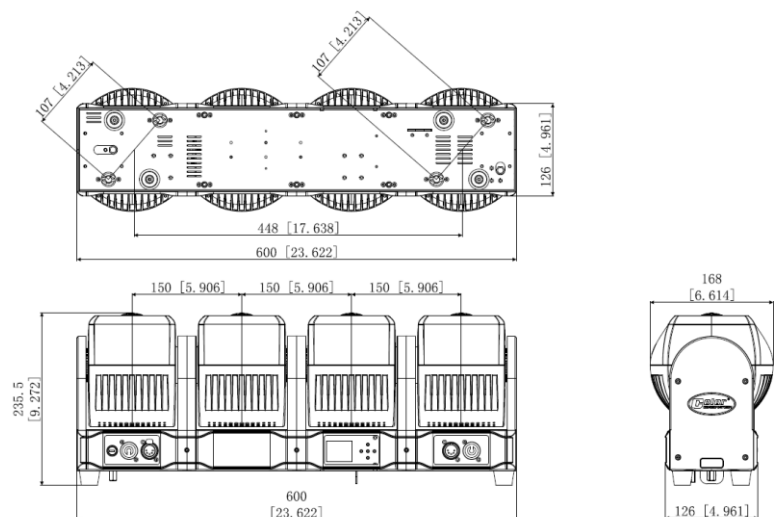
① CRAZYBAR 46	1PC
② Signal Cable	1PC
③ Power Cable	1PC
④ Omega Clamp	2PC
⑤ Safety Cable	1PC
⑥ User Manual	1PC

3 FEATURES & SPECIFICATIONS

4*60W 4-IN-1 RGBW LEDs
 (4*30)*0.2W 3-IN-1 SMD RGB LEDs
 Flicker free operation for broadcast TV and FILM
 Life Span: 50000H
 4PCS high efficiency lens
 3.5°Projection angle
 TILT: 2 modes
 1. 360° Continuous movement
 2. 240° (8/16 bit)
 Fast, quiet, smooth and precise 2-phase motors
 Smooth, fast and precise resolution for TILT movement with low noise operation
 Scan position memory, auto reposition after unexpected movement
 Pixel mapping capability with each LEDs controllable individually
 Sophisticated 4 colors RGBW mixed
 Linear CTO 2500-8000K
 Sharp beam effect
 Preset static patterns
 Preset dynamic patterns with variable speed
 Preset dynamic color macro with variable speed
 Each head with strip effect with different built-in macros (variable speed control)
 0-100% Smooth linear LED dimming
 1-25Hz shutter/strobe effect with variable speed
 Preset pulse strobe effect with variable speed
 Random strobe effect with variable speed
 22/39/61/ DMX channels USITT DMX-512
 DMX512, master-slave, sound activated or auto operation
 DMX recorder and edit function integrated
 RDM available (Remote Device Management)
 Shielded input signal protection for stable signal without interference
 3-Pin XLR connectors IN/OUT
 Electronic supply with active PFC
 AC100-240V 50/60Hz
 PowerCON IN/OUT with fuse
 320W Power consumption
 -25°C to 45°C ambient temperature
 IP20 protection rating

13	MASTER SHUTTER	239 - 251	Random Strobe at high frequency
		252 - 255	Light ON
14	MASTER DIMMER	000 - 255	Linear Dimmer 0 – 100%
15	MASTER DIMMER FINE	000 - 255	Fine Dimmer (16 bit)
16	FUNCTION	000 - 255	FUNCTION
17	RESET	000 - 025	Unused Range
		026 - 127	Tilt Reset
		128 - 255	Complete Reset
18	DUMMY	000 - 255	DUMMY
19	SHAPE RED	000 - 255	Linear 0 – 100%
20	SHAPE GREEN	000 - 255	Linear 0 – 100%
21	SHAPE BLUE	000 - 255	Linear 0 – 100%
22	SHAPE WHITE	000 - 255	Linear 0 – 100%
23	BACKGROUND CTO – TBD	000 - 255	TBD
24	BACKGROUND SHUTTER	000 - 003	Light OFF
		004 - 103	Strobe frequency from slow (1 flash/sec) to fast (25 flash/sec)
		104 - 107	Light ON
		108 - 207	Pulsation frequency from slow (1 flash/sec) to fast (25 flash/sec)
		208 - 212	Light ON
		213 - 225	Random Strobe at slow frequency
		226 - 238	Random Strobe at medium frequency
		239 - 251	Random Strobe at fast frequency
252 - 255	Light ON		
25	BACKGROUND DIMMER	000 - 255	Linear Dimmer 0 – 100%
26	PATTERN MODE	000 - 005	Normal
		006 - 130	Static
		131 - 255	Dynamic
27	PATTERN SELECTION	000 - 007	Effect 1
	
		255	Effect XXX

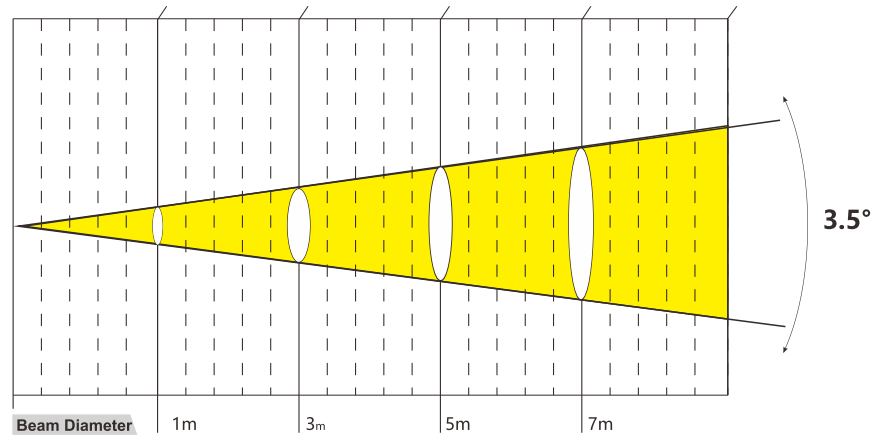
Channel	Function	Dmx Value	Description
1	RED	000 - 255	Linear 0 - 100%
2	RED FINE	000 - 255	Linear Fine Red (16 Bit)
3	GREEN	000 - 255	Linear 0 - 100%
4	GREEN FINE	000 - 255	Linear Fine Green (16 Bit)
5	BLUE	000 - 255	Linear 0 - 100%
6	BLUE FINE	000 - 255	Linear Fine Blue (16 Bit)
7	WHITE	000 - 255	Linear 0 - 100%
8	WHITE FINE	000 - 255	Linear Fine White (16 Bit)
9	CTO	000 - 255	8000K to 2500K
		000 - 009	CTO Off
		010 - 255	8000K to 2500K
10	MACRO COLOUR	000 - 255	MACRO COLOUR
11	BACKGROUND SHUTTER	000 - 003	Light OFF
		004 - 103	Strobe frequency from slow (1 flash/sec) to fast (25 flash/sec)
		104 - 107	Light ON
		108 - 207	Pulsation at linearity from slow (1 flash/sec) to fast (25 flash/sec)
		208 - 212	Light ON
		213 - 225	Random Strobe at low frequency
		226 - 238	Random Strobe at medium frequency
		239 - 251	Random Strobe at high frequency
252 - 255	Light ON		
12	BACKGROUND DIMMER	000 - 255	Linear Dimmer 0 – 100%
13	MASTER SHUTTER	000 - 003	Light OFF
		004 - 103	Strobe frequency from slow (1 flash/sec) to fast (25 flash/sec)
		104 - 107	Light ON
		108 - 207	Pulsation frequency from slow (1 flash/sec) to fast (25 flash/sec)
		208 - 212	Light ON
		213 - 225	Random Strobe at low frequency
		226 - 238	Random Strobe at medium frequency



4 PHOTOMETRIC DATA

Photometric Beam Angle Data 3.5° Beam Angle $LUX \times 0.0929 = FC$

R	1600	206	80	42	
G	3860	520	195	102	
B	144	20	8	4	
W	4673	647	239	124	
RGBW	9640	1278	487	256	(LUX)

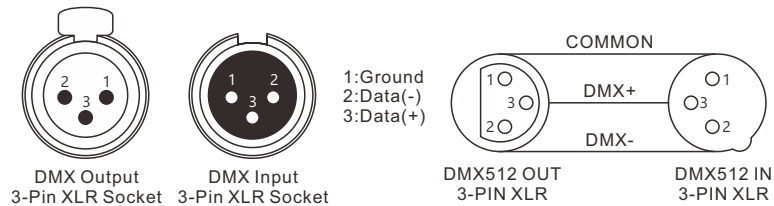
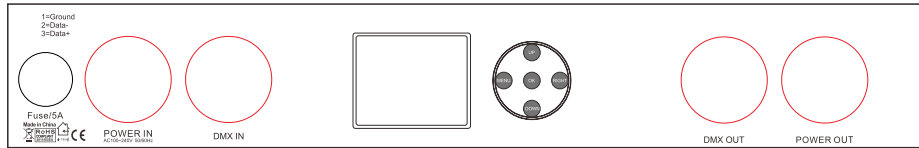


5 DMX-512 CONTROL CONNECTIONS

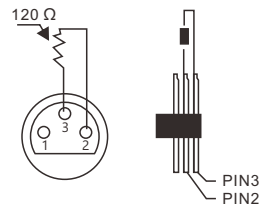
Connect the provided XLR cable to the female 3-pin XLR output of your controller and the other side to the male 3-pin XLR input of the moving head. You can chain multiple Moving head together through serial linking. The cable needed should be two core, screened cable with XLR input and output connectors. Please refer to the diagram below.

DMX-512 connection with DMX terminator

36	GREEN (STRIP LIGHT)	0 - 255	Linear 0 -100%
37	BLUE (STRIP LIGHT)	0 - 255	Linear 0 -100%
38	EFFECT (STRIP LIGHT)	0 - 255	Dynamic effect options
39	EFFECT (STRIP LIGHT)	0 - 255	Speed control of dynamic effect



For installations where the DMX cable has to run a long distance or is in an electrically noisy environment, such as in a discotheque, it is recommended to use a DMX terminator. This helps in preventing corruption of the digital control signal by electrical noise. The DMX terminator is simply an XLR plug with a 120 Ω resistor connected between pins 2 and 3, which is then plugged into the output XLR socket of the last fixture in the chain. Please see illustrations below.



17	Red 1	000 - 255	Red 1
18	Green 1	000 - 255	Green 1
19	Blue 1	000 - 255	Blue 1
20	Red 2	000 - 255	Red 2
21	Green 2	000 - 255	Green 2
22	Blue 2	000 - 255	Blue 2
23	Red 3	000 - 255	Red 3
24	Green 3	000 - 255	Green 3
25	Blue 3	000 - 255	Blue 3
26	Red 4	000 - 255	Red 4
27	Green 4	000 - 255	Green 4
28	Blue 4	000 - 255	Blue 4
29	TILT 1 ROTATION		360° Continuous TILT 1 Rotation
		000 - 003	No Function
		004 - 129	Forward rotation from fast to slow
		130 - 255	Backward rotation from slow to fast
30	TILT 2 ROTATION		360° Continuous TILT 2 Rotation
		000 - 003	No Function
		004 - 129	Forward rotation from fast to slow
		130 - 255	Backward rotation from slow to fast
31	TILT 3 ROTATION		360° Continuous TILT 3 Rotation
		000 - 003	No Function
		004 - 129	Forward rotation from fast to slow
		130 - 255	Backward rotation from slow to fast
32	TILT 4 ROTATION		360° Continuous TILT 4 Rotation
		000 - 003	No Function
		004 - 129	Forward rotation from fast to slow
		130 - 255	Backward rotation from slow to fast
33	STRIP LIGHT DIMMER	0 - 255	Linear Dimmer 0 – 100%
34	SHUTTER (STRIP LIGHT)	0 - 255	Strobe frequency from slow (1 flash/sec) to fast (25 flash/sec)
35	RED (STRIP LIGHT)	0 - 255	Linear 0 -100%

6 MENU OPERATIONS

MainMenu	Second	Third	Fourth
DmxAddress	000 - 512		
Fixture	DmxMode	22CH/39CH/61CH	
	Run Mode	DMX/ Host	
	Pan Invert	Close/ Open	
	TiltInvert	Close/ Open	
	No DmxSignal	Clear/ Hold	
	SoundControl	1 -- 99	
Manual	Pan	000 - 255	
	Pan Fine	000 - 255	
	Tilt	000 - 255	
	TiltFine	000 - 255	
	⋮	⋮	
Information	Time	Current Time	xxxH
		Total Time	xxxH
	Sensor	AllSensorare ok!	
	Temperature	HeadTemp	xxxC
	SoftwareVersion	Panel	Vx.xx
Motor		Vx.xx	
Factory	Password	000 - 255	
	Tilt1	000 - 255	
	Tilt2	000 - 255	
	Tilt3	000 - 255	
	Tilt4	000 - 255	
	Tilt5	000 - 255	
	Tilt6	000 - 255	
	Tilt7	000 - 255	
	Tilt8	000 - 255	
	Red	000 - 255	
Green	000 - 255		
Blue	000 - 255		
White	000 - 255		
FixtureReset	MotorReset	Cance/ Run	
	Factory	Cance/ Run	
Display	Language	CH / EN	
	DisplayFlip	Normal/ Reverse	
	Display Mode	60s/ Show	

7 DMX CHANNELS

22CH

Channel	Function	Dmx Value	Description
1	TILT	000 - 255	0-270° TILT movement
2	TILTFINE	000 - 255	Fine control of TILT movement
3	TILT ROTATION		360° Continuous TILT Rotation
		000 - 003	No Function
		004 - 129	Forward rotation from fast to slow
		130 - 255	Backward rotation from slow to fast
4	SPEED	000 - 255	Speed control of TILT movement
5	DIMMER	000 - 255	Linear Dimmer 0 - 100%
6	MASTERSHUTTER	000-003	Light OFF
		004 - 103	Strobe frequency from slow (1 flash/sec) to fast (25 flash/sec)
		104 - 107	Light ON
		108 - 207	Pulsation frequency from slow (1 flash/sec) to fast (25 flash/sec)
		208 - 212	Light ON
		213 - 225	Random Strobe at low frequency
		226 - 238	Random Strobe at medium frequency
		239 - 251	Random Strobe at high frequency
252 - 255	Light ON		
7	RED	000 - 255	Linear 0 - 100%
8	GREEN	000 - 255	Linear 0 - 100%
9	BLUE	000 - 255	Linear 0 - 100%
10	WHITE	000 - 255	Linear 0 - 100%
11	MACRO COLOUR	000 - 255	MACRO COLOUR
12	CTO		8000K to 2500K
		000 - 009	CTO Off
		010 - 255	8000K to 2500K
13	EFFECT	000 - 255	Dynamic effect options
14	EFFECTSPEED	000 - 255	Speed control of dynamic effect
15	RESET	000 - 255	RESET
		000 - 025	Unused Range
		026 - 255	Complete Reset (5s)
16	STRIPLIGHT DIMMER	000 - 255	Linear Dimmer 0 - 100%
17	SHUTTER (STRIPLIGHT)	000 - 255	Strobe frequency from slow (1 flash/sec) to fast (25 flash/sec)
18	RED (STRIPLIGHT)	000 - 255	Linear 0 - 100%
19	GREEN (STRIPLIGHT)	000 - 255	Linear 0 - 100%
20	BLUE (STRIPLIGHT)	000 - 255	Linear 0 - 100%
21	EFFECT (STRIPLIGHT)	000 - 255	Dynamic effect options
22	EFFECT (STRIPLIGHT)	000 - 255	Speed control of dynamic effect

39CH

Channel	Function	Dmx Value	Description		
1	RED	000 - 255	Linear 0 - 100%		
2	GREEN	000 - 255	Linear 0 - 100%		
3	BLUE	000 - 255	Linear 0 - 100%		
4	WHITE	000 - 255	Linear 0 - 100%		
5	CTO	000 - 255	8000K to 2500K		
		000 - 009	CTO Off		
		010 - 255	8000K to 2500K		
6	MACRO COLOUR	000 - 255	MACRO COLOUR		
7	MASTER SHUTTER	000 - 003	Light OFF		
		004 - 103	Strobe frequency from slow (1 flash/sec) to fast (25 flash/sec)		
		104 - 107	Light ON		
		108 - 207	Pulsation frequency from slow (1 flash/sec) to fast (25 flash/sec)		
		208 - 212	Light ON		
		213 - 225	Random Strobe at low frequency		
		226 - 238	Random Strobe at medium frequency		
		239 - 251	Random Strobe at high frequency		
		252 - 255	Light ON		
		8	MASTER DIMMER	000 - 255	Linear Dimmer 0 - 100%
		9	MASTER DIMMER FINE	000 - 255	Fine Dimmer (16 bit)
10	FUNCTION	000 - 255	FUNCTION		
11	RESET	000 - 025	Unused Range		
		026 - 127	Tilt Reset		
		128 - 255	Complete Reset		
12	DUMMY	000 - 255	DUMMY		
13	TILT 1	000 - 255	Mirror 1 positioning (Default REVERSE HEADS option OFF)		
14	TILT 2	000 - 255	Mirror 2 positioning (Default REVERSE HEADS option OFF)		
15	TILT 3	000 - 255	Mirror 3 positioning (Default REVERSE HEADS option OFF)		
16	TILT 4	000 - 255	Mirror 4 positioning (Default REVERSE HEADS option OFF)		